



AlphaSuit Women

Business Suits



Lapel and Collar

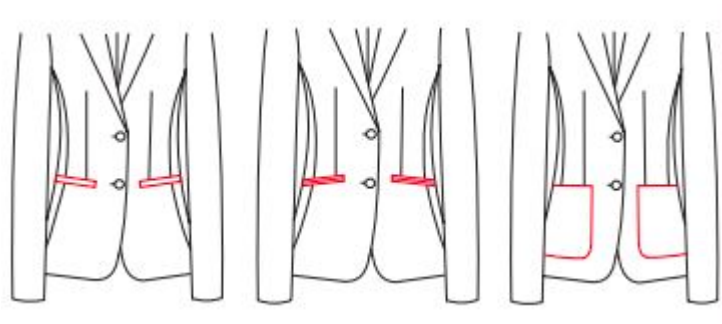


Lower pocket

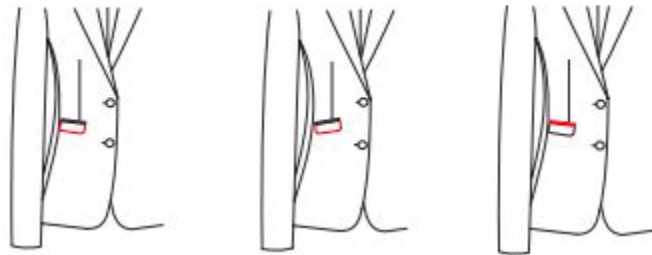


Front style





Ticket pocket





Breast Pocket







4002



4007

Sleeve button type

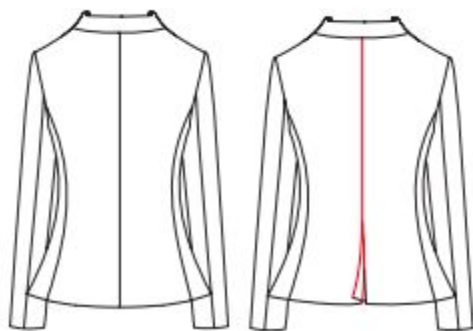






4006

Back vent style



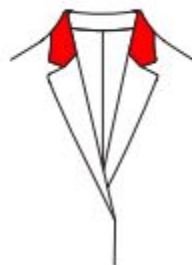
Chest dart style



Lapel fabric



Collar fabric



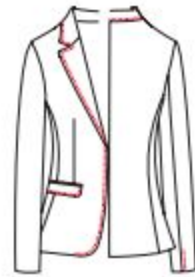


1572



15L9

Pic stitch/Top stitch style





2104

2.5cm Arc slant pocket



2101

△ 3.2cm Arc slant pocket



213C

No front pocket



2136

Front round jeans pocket



2131

Fake double besom pocket
length 10cm



2138

DL jeans pocket



2103

Large slant pocket

Waist style



Belt loop and heel guard style



Back pocket style



21A0

△ No back pocket



2200

Double besom back pocket
(Hidden seal)



2206

Double besom decoration pocket
(No buttonhole)



2202

Double besom pocket
with button/buttonhole



2221

Welt pocket(hidden seal)



22P3

Only welt right back pocket, No
buttonhole, no left back pocket



22G3



2201



222E

SHIRT

STYLE&DESIGN MANUAL

Placket style



5118 Tuxedo front 42.5cm
pleat for each side



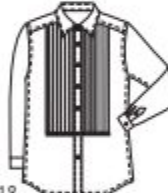
△S-530X
Normal



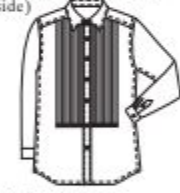
S-530A
Accordion pleats front
with pleated patch(13
0.7cm width pleat each
side)



5109
Top five buttons part
are plain front ,the
rest is hiddenbutton
front



5119
Two placket front
w/pleated patch (seven
1.3cm width pleats each
side)



S-5110
Tuxedo front 10.0.7cm
pleat for each side



S-520S
Tuxedo front. Ten 0.7cm
pleat on each side to
bottom

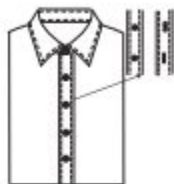


S-530W
Single pleat on
each side



S-513A
Front with triangle
patched fabrics.
0.1cm top stitch

Placket style



520Q Left & right
placketfront



5102 Un-functional
placket front



520D Gripping hidden
button front



5103 Hidden button front



518B Left & right
plain front

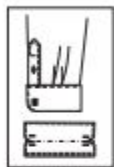


△5101 Placket

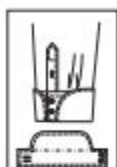


531D Right coverleft

Cuff style



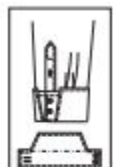
5578
French cuff with
2layers.
4buttonholes
on the 1/3 position
after folded



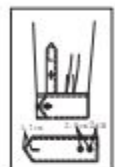
545C
Single semicircle
French cuff two
buttons & two
buttonholes



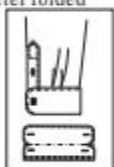
546Z
Semicircle French
cuff three buttons
& three buttonholes



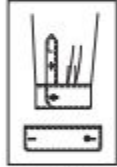
5453
Trapezoid French
cuff two buttons &
two buttonholes



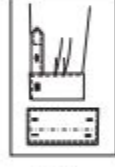
S-5441
Pointed cuff one button
& one buttonhole



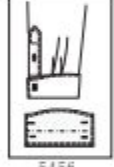
545T
Rounded french
cuff



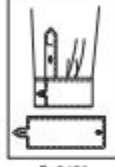
S-5408
Hexagon cuff one
button & two
buttonholes



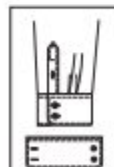
5455
Square French
cuff four
buttonholes



5456
Large arc French
cuff four but
tonholes



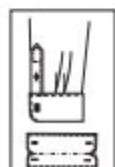
S-5451
Square cuff w/tab
one button & one but
tonholes



S-5415
Small rounded cuff
two buttons & two
buttonholes



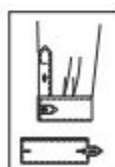
53A3
French inverted
arc cuff two buttons



5457
French cuff
with tab five
buttonholes cuff
top stitch 0.3cm

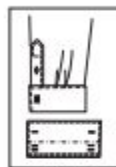


5458
Semicircle French
cuff two buttons &
two buttonholes

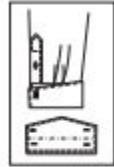


S-545Y
French cuff with
tab one buttons &
three buttonholes

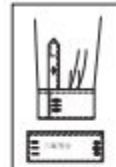
Cuff style



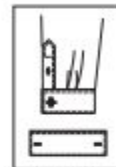
5467
French square
cuff with 6
buttonholes



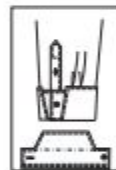
5454
Triangle French
cuff four
buttonholes



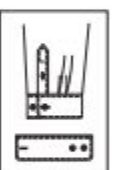
S-545N
Square cuff with
4 buttonholes &
2 buttons



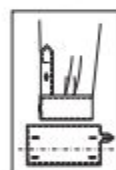
S-5406
Single square
french cuff two b
uttonholes



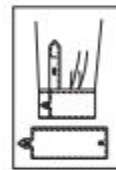
545P
Trapezoid french
cuff with 1 button &
\ buttonhole



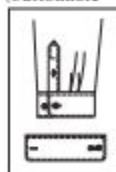
S-5411
Rounded cuff two
buttons & one
buttonhole



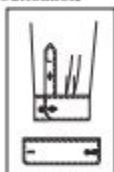
5980
French cuff with
tab five buttonholes
cuff top stitch 0.3cm



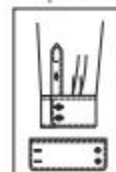
S-5451
Square cuff with tab
on sleeve placket
1 button & buttonhole



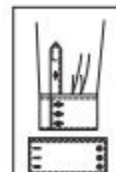
5783
Rounded cuff with
2 buttons & buttonhole,
2 buttons & two
buttonholes on inner
sleeve
placket



5786
Hexagon cuff with
2 buttons &
buttonhole, 2 buttons
on inner sleeve
placket

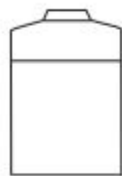


S-5412
Rounded cuff
with 2 buttons &
buttonhole

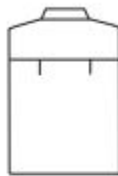


S-5403
Square cuff three
buttons & three
buttonholes

Back style



S-5140
No pleat and
no dart



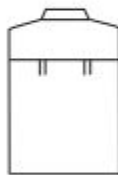
△S-5141
Side pleats



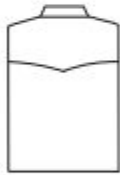
5782 Western
yoke



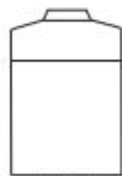
S-5142
Inverted box pleat



S-5148
Shoulder Pleats
(Double)



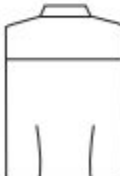
S-5149
Triangle yoke



S-5170
Normal yoke



S-5143
Box pleats

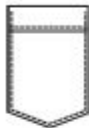


S-5144
No pleat with
double darts

Pocket style



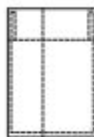
S-5300
Triangle pocket
with straight
edgefold



5301
Triangle pocket
with ornamental
edgefold



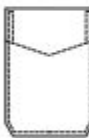
S-5302
Triangle pocket
with triangle
edgefold



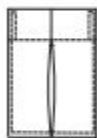
S-5306
Square pocket
with pen pocket



S-5316
Gripping round pocket
with Inverted Center
Box Pleat



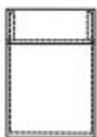
S-5310
Hexagon pocket
with triangle
edgefold



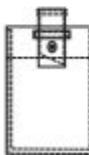
S-536F
Square pocket I
nverted box pleat



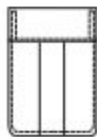
S-5340
Square pocket with
straight edgefold



S-5344
Hexagon pocket
with straight
edgefold and
box pleat



S-5304
Square pocket
with loop

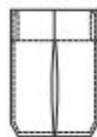


S-5315
Rounded hem pocket
with box pleat

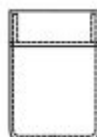


S-5312
Hexagon pocket with
straight edgefold

Pocket style



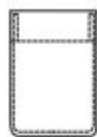
S-536A
Hexagon pocket
Inverted Pleat



5324
Round pocket
with ornamental
edgefold

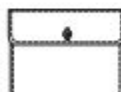


S-5325
Round pocket with
triangle edgefold

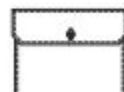


S-5323
Round pocket with
straight edgefold

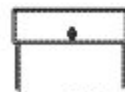
Flap option



5374
Round flap with
one button

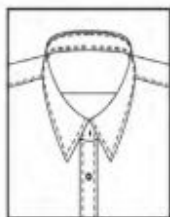


5372
Hexagonal flap
with one button



5376
Square flap with
one button

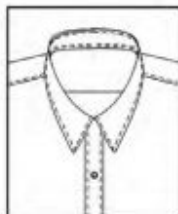
Collar style



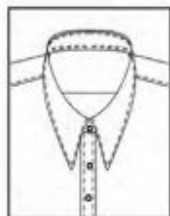
5AK9
Large pointed collar D
collar point 8.2cm



5AK8
Medi pointed collar D
collar point 7.6cm



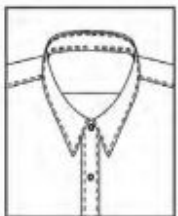
5AK7
Small pointed collar D
collar point 6.4cm



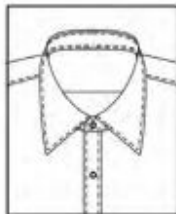
5AL3
Large pointed collar E
collar point 8.2cm



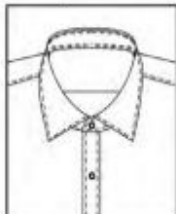
5AL2
Medi pointed collar E
collar point 7.6cm



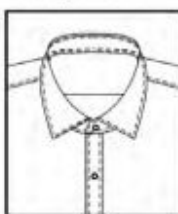
5AL1
Small pointed collar E
collar point 5.6cm



5AL6
Large square collar G
collar point 8.2cm

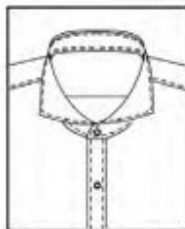


△ 5AL5
Medi square collar G
collar point 7.6cm

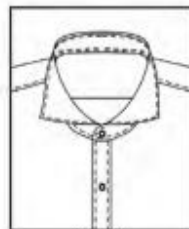


5AL4
Small square collar G
collar point 6.4cm

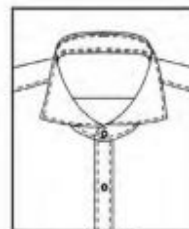
Collar style



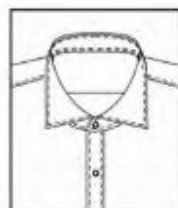
5AM1
Small cut away collar N
collar point 6.4cm



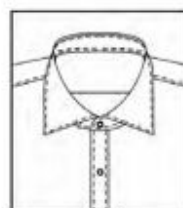
5AM2
Medi cut away collar N
collar point 7.6cm



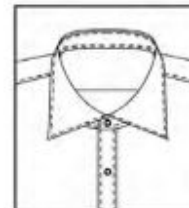
5AM3
Large cut away collar N
collar point 8.2cm



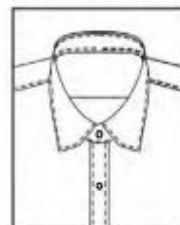
5AL7
Small cut away collar H
collar point 6.4cm



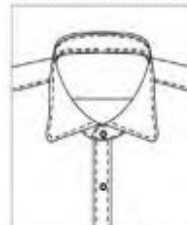
5AL8
Medi cut away collar H
collar point 7.6cm



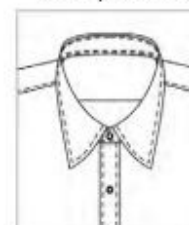
5AL9
Large cut away collar H
collar point 8.2cm



5L50
Hexagon collar E
collar point 7.6cm

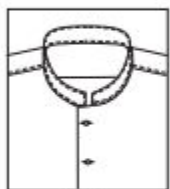


5L54
Small round collar E
collar point 7.6cm

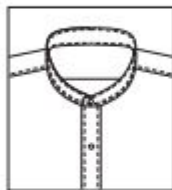


5230
Medi arch collar
collar point 8.8cm

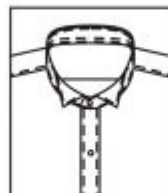
Collar style



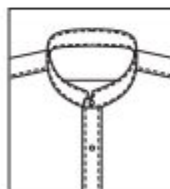
5L51
Band collar 1



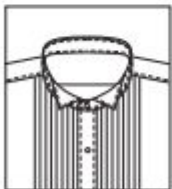
S-5250
Band collar (#56)



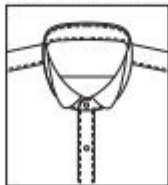
5582
97# tuxedo collar



5251
Band collar (#57)

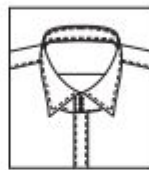


S-5260
95# Tuxedo collar

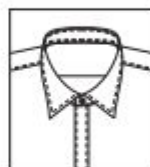


5567
96# Tuxedo collar with
round collar point

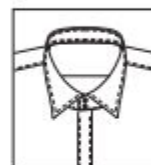
Collar band



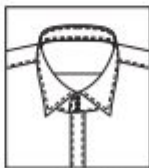
S-5276
Squared collar band
w/three button



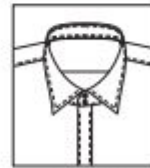
S-5274
Squared collar band
w/one button



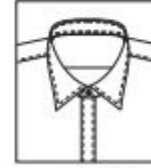
S-5275
Squared collar band
w/two button



S-5273
Rounded collar band
w/three button



S-5271
Rounded collar band
w/two button



△S-5270
Rounded collar band
w/one button